

QUICK START GUIDE

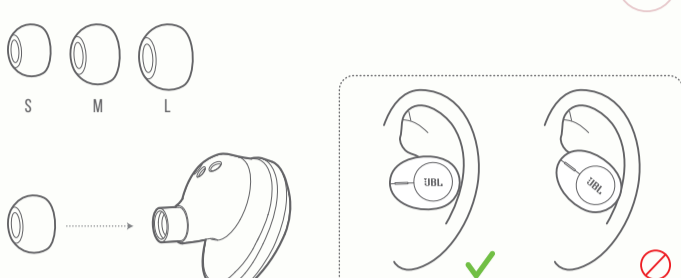
TUNE125TWS



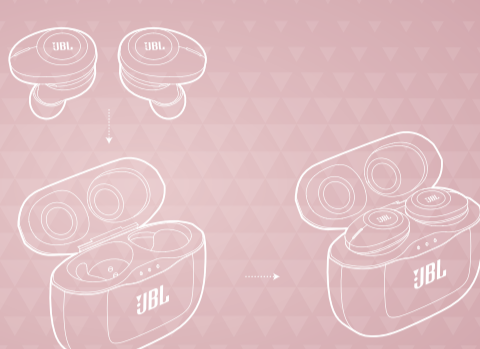
WHAT'S IN THE BOX



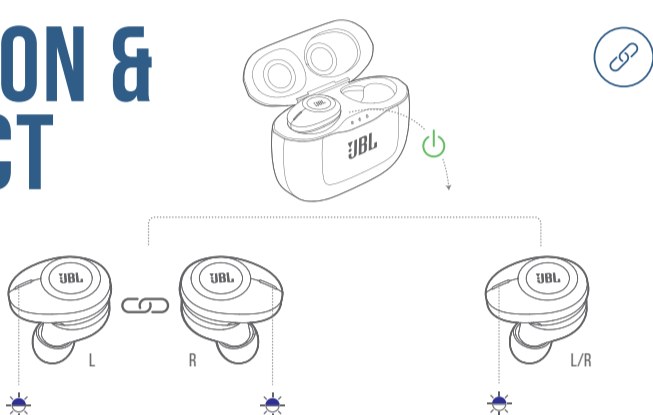
HOW TO WEAR



FIRST TIME USE



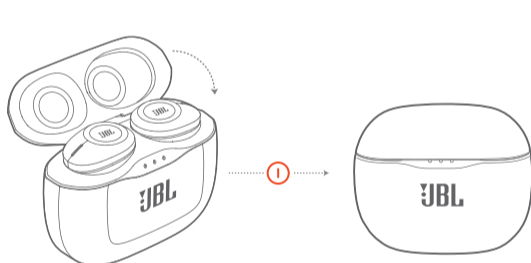
POWER ON & CONNECT



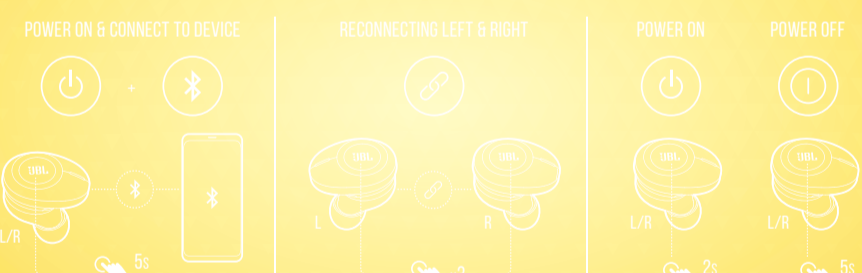
PAIRING



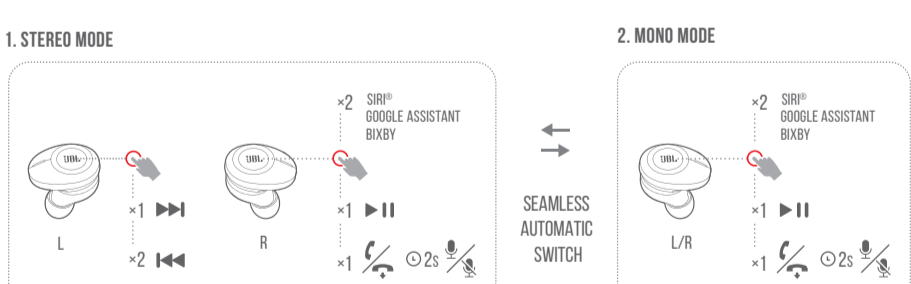
POWER OFF



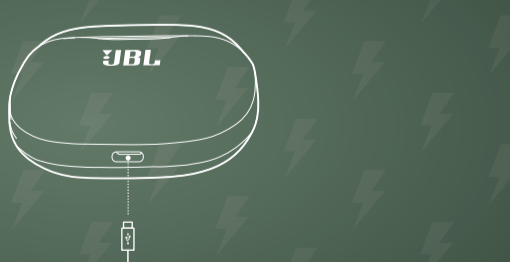
MANUAL CONTROLS



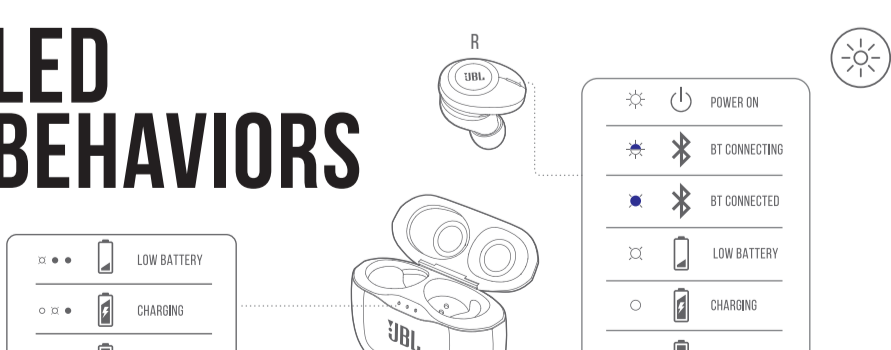
BUTTON COMMAND



CHARGING



LED BEHAVIORS



TECH SPEC

Driver size: 5.8 mm Dynamic driver
 Frequency response: 20 Hz – 20 kHz
 Sensitivity: 96 dB SPL @ 1 kHz 1 mW
 Maximum SPL: 96 dB
 Microphone sensitivity: -38 dBV / Pa @ 1 kHz
 Impedance: 14 ohm
 Bluetooth transmitted power: < 12 dBm
 Bluetooth transmission modulation: GFSK, π/4 DQPSK, 8DPSK
 Bluetooth frequency: 2.402 GHz - 2.480 GHz
 Bluetooth profile version: A2DP 1.3, AVRCP 1.5, HFP V1.7
 Bluetooth version: 5.0
 Headset battery type: Lithium-ion battery (85 mAh / 3.7 V DC)
 Charging case battery type: Lithium-ion battery (850 mAh / 3.7 V DC)
 Power supply: 5 V = 1.0 A
 Charging time (headset & charging case): < 2 hrs from empty
 Music playtime with BT on: 8 hrs
 Weight: 73 g

